

# ***A Taste of Honey***

The ground breaking Salford-based drama

Friday 25 May – Saturday 9 June 2018  
An Oldham Coliseum Theatre Production  
By Shelagh Delaney  
Directed by Chris Lawson  
Designed by Sammy Dowson

---

**Press Night: Friday 25 May, 7.30pm**

---

Oldham Coliseum Theatre transforms into 1950s Salford this May with a new production of Shelagh Delaney's ***A Taste of Honey***, directed by Associate Director, **Chris Lawson**.

Recognised as the pre-cursor to *Coronation Street* and one of Morrissey's lyrical inspirations, ***A Taste of Honey*** is a gritty play about a mother and daughter trapped in a destructive and resentful love-hate relationship. Jo's ambition is to get away from her alcoholic mother, Helen, who dominates her life. She falls pregnant to a sailor and takes comfort in the friendship of a gay art student, but can she stop herself from becoming the one thing she never wanted to be – just like her mother.

Shelagh Delaney was Britain's first working-class female playwright. She wrote ***A Taste of Honey*** when she was just 18 years old, in 1958. The play premiered at Theatre Workshop, Stratford East and transferred to the West End the following year. In 1961 it was adapted into a classic film starring Rita Tushingham and Dora Bryan.

***A Taste of Honey*** was one of the finest examples of the 'kitchen sink drama' born in the 1950s. In the wake of the Second World War a new breed of writers decided that it was time to give working class characters, and working-class stories, a heart and soul. The play was written when 70% of women giving birth had no pain relief, three years before the introduction of the contraceptive pill and nine years before the legalisation of homosexuality and abortion.

Coliseum Associate Director, **Chris Lawson**, joined the company in 2015 and has established a reputation for bringing energy and adventure to his productions. His work for the theatre includes: *The Kitchen Sink* (★★★★ - The Stage), *Up 'N' Under* (★★★★.5 - The Reviews Hub), *Hard Times* (★★★★ - Remote Goat) and *Jumpers For Goalposts* (★★★★ - The Reviews Hub).

The cast for ***A Taste of Honey*** features **Gemma Dobson** as Jo, who made her professional stage debut as Sue in the reinstated run of *Rita, Sue and Bob Too* at the Royal Court, London earlier this year; and **Kerrie Taylor**, best known as Beth Enright/Beresford in ITV's *Where The Heart Is*, as Helen.

Oldham Coliseum Theatre's production of ***A Taste of Honey*** is sponsored by New Charter Homes.

- Ends -----

#### Notes to Editor:

***A Taste of Honey*** runs from Friday 25 May – Saturday 9 June 2018 at Oldham Coliseum Theatre.

Tickets can be booked on 0161 624 2829 or at [www.coliseum.org.uk](http://www.coliseum.org.uk)

Link to production page: <http://www.coliseum.org.uk/plays/a-taste-of-honey/>

For further press information, please contact Shelly Ramsdale on 0161 785 7012 or [shellyramsdale@coliseum.org.uk](mailto:shellyramsdale@coliseum.org.uk)

Oldham Coliseum Theatre is a cultural and educational charity that works with over 150,000 individuals per year.

The Coliseum has a rich history in Greater Manchester dating back to 1885. It provides a wide variety of distinctive theatre performances and participatory activities for people from all communities in Oldham, Greater Manchester and beyond. It creates eight original productions each year, of which up to half are newly-commissioned work, which are presented at the Coliseum and on tour. Intrinsic to the town's on-going regeneration, the theatre works with its local communities and young people to develop creative programmes to facilitate learning, engagement and community cohesion. The Coliseum is actively engaged with Oldham Council and Arts Council England to deliver a new theatre in the town by 2020.

-----

#### Images:

A high-resolution JPEG of the artwork for ***A Taste of Honey*** is available to download from Dropbox via: <https://www.dropbox.com/s/yq3k87ij5c1lua/A%20Taste%20of%20Honey.jpg?dl=0>

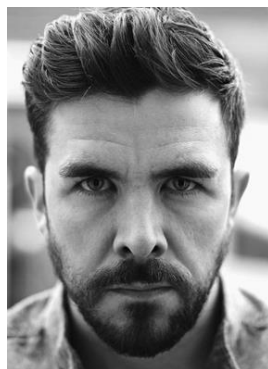
Rehearsal photographs will be available from Wednesday 16 May 2018.

Production photographs will be available from Friday 25 May 2018

#### Cast:



**Gemma Dobson**  
- Jo



**Phil Rowson**  
- Peter



**Max Runham**  
- Geof



**Kerrie Taylor**  
- Helen



**Kenton Thomas**  
- Jimmie

**Production Team:**

**Chris Lawson** – Director

**Sammy Dowson** – Designer

**Stewart Bartles** – Lighting Designer

**Lorna Munden** – Sound Designer